

# What's happening...

# waterRIDE™

Issue 6 – August 2010

www.waterRIDE.net

The waterRIDE™ development team have managed to include a host of new features as well as enhancements to existing features in the latest release of waterRIDE™ FLOOD Manager. All users with current Annual Maintenance Plans should receive the download links via email shortly.

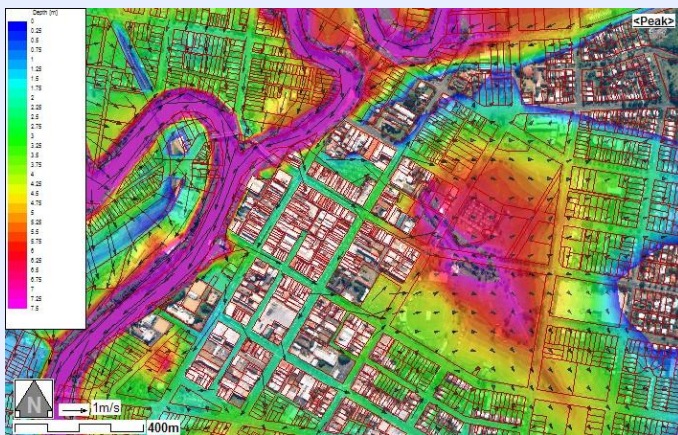
## New Feature Spotlight – Exporting Velocity Vectors to GIS

Since inception, waterRIDE™ FLOOD Manager has been able to display velocity vectors (velocity magnitude and direction) on top of any thematic surface.

Some users have expressed a desire to export these vectors to GIS which has now been incorporated into the latest release.

Velocity vectors, as seen on the screen, can be exported from the Tools->Export Menu.

However, GIS cannot rescale vectors as is done automatically when zooming and panning in waterRIDE™, which means that the vectors should only be displayed at the resolution (or zoom level) at which they were created.



## waterRIDE™ TERRAIN – Stable Pre-Release

waterRIDE™ TERRAIN is approaching the final stages of testing with a stable pre-release version recently used to develop DEM's covering the entire Fraser Coast Local Government Area (LGA) in Queensland.

The source elevation data consisted of almost 10,000 1km<sup>2</sup> "XYZ" LiDAR tiles (approximately 250GB of data).

The result (matching Councils requirements) were 250 1.0m DEM tiles.

This provided Council with the ability to access fine scale DEM's of anywhere in the LGA, whilst allowing DEM's of any other resolution and extent to be readily created using waterRIDE™ TERRAIN to suit more specific requirements, on demand.

Pricing for the tool has been set at A\$500 (ex GST) per license.

If you have any questions on how waterRIDE™ TERRAIN may be of use to you, please feel free to contact us.

## New Update Release Strategy

Early feedback from general users was that *frequent* release of version updates was more of a 'hassle' than a benefit due to the need to involve 'IT' and the frequency of use of software.

In line with this, we have traditionally waited until a significant number of features/bug fixes were developed until issuing a release.

However, feedback from 'power users' has been that they are happy to receive updates whenever possible to get their hands on new features and bug fixes as soon as possible.

waterRIDE™ products are updated on an almost weekly basis as they are in continual use on project work by WorleyParsons personnel, including the software developers themselves.

From this, we have decided to issue more frequent, minor releases, but include detailed information on who the release would be of value to.

In this way, users can quickly decide whether the new release is applicable for, or of value to them.

We anticipate flagging each release with an overall *category* as well as details of specific changes, as follows:

- *Critical* – updates applicable to all users. You should download and install these releases ASAP as they contain important bug fixes.
- *All Users* – a general update with new features suitable for all users. May include general speed/interface improvements, new interrogation tools etc
- *Power Users* – new features suitable for frequent users of the software. May include new tools and FPM tools.
- *Modellers* – new features suitable for those who regularly use waterRIDE as part of their flood modelling. May include updates such as new model versions/file formats, and new/updated utilities.

All releases will remain on the waterRIDE download server for a period of 12 months, allowing users to access any release version at their convenience (provided their annual maintenance agreement was active at the time of release).

We trust that this altered release pattern will be of benefit to all our users and we would appreciate any comments you may have.

## Quick Tip – Improve Display Speed

Try to limit the number of contour ranges to 20-30. The greater the number of ranges, the longer the display time.

Level 12 / 141 Walker St  
North Sydney, 2060  
Australia

PO Box 1812  
North Sydney, 2059  
Australia

ph: + 61 2 8456 7352  
fx: + 61 2 8923 6877  
em: waterRIDE@worleyparsons.com



**WorleyParsons**  
resources & energy