



This year we commenced our first set of formal waterRIDE™ group training in Australia and New Zealand. Interest has been strong and the sessions have raised a couple of common themes, one of which we talk about in this newsletter.

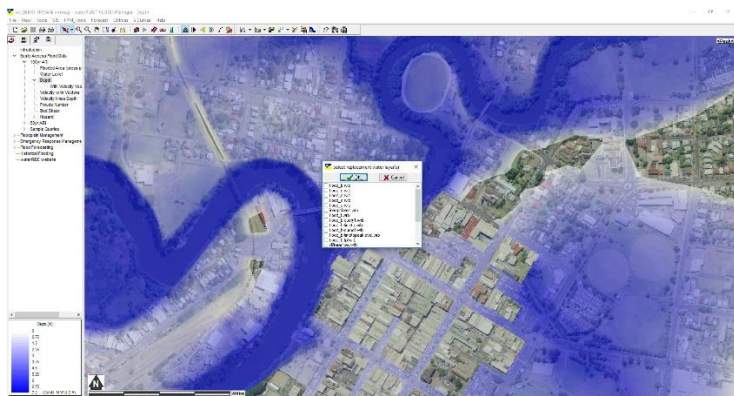
Based on feedback, we are looking to add some additional courses next year, particularly in the flood forecasting space.

Building Projects

As we completed the first round of our waterRIDE™ group training sessions, we noticed a number of “aha” moments when going through tips to rapidly increase the speed of project building in the advanced sessions.

As a result, we have highlighted some important time saving tools and shortcuts:

Copy and Paste Branches: By first building a branch for a given water surface (eg for 100yr depth, hazard, level, VxD etc), simply copy the branch then paste the branch “to base”. The tool will prompt for other water surfaces to “replace” the one being copied, allowing you to build duplicate branches for all other floods (eg 5yr, 10yr, 20yr, 50yr, PMF) instantly, using the configuration settings for the first branch.



Project Templates: Expanding on the above, project templates allow you to build one branch of your project (say, for the 100yr flood) and then apply that to all surfaces for a catchment, and in turn to all catchments as a bulk process. Ideal for maintaining standard project layouts across multiple catchments at the “click of a button”.

CTRL-A: Quickly access the display styles for the active layer within the current view.

F2: Press F2 to rename the current view (this also applies to renaming files in Windows File Explorer).


CTRL-Arrow Keys: Move the current view/branch up/down the table of contents tree.

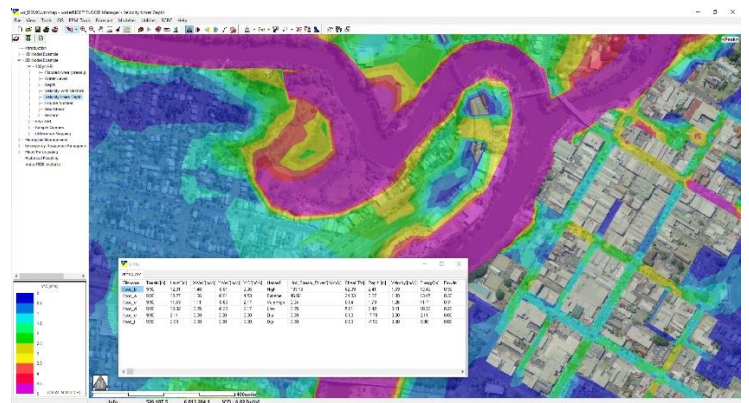
View->Copy View Setup: Apply the configuration of one view to any number of others views (eg default extents, transparency, smoothing, hill shade etc).

View->Add/Remove Layers To/From Multiple Views: Quickly add or remove a layer to/from any number of views.


Feature In Focus – Inspecting Multiple Surfaces At Once

Inspecting all available hydraulic parameters for all flood surfaces at any given location is quite a simple task.

Simply select any view with a water surface already active (or make one active if using Manager), then use the “Add Layers” tool () to turn on any number of additional water surfaces.



Inspect All Parameters for All Surfaces in The View

Then, use the dropdown section of the object info button () and select “All Surfaces in View”.

Clicking on any location will bring up a table of all hydraulic parameters, for all surfaces in the view.

Right clicking on the table allows you to then copy/select the information to a Word table/email or export to an Excel spreadsheet.

Working with Massive Datasets

If you are working with huge gridded datasets, waterRIDE™ will operate in *infinite grid* mode, streaming data rather than loading it into memory.

Unless your surface is located on a (local) Solid State Drive (SSD), performance will be significantly improved by building surface pyramids (Utilities menu).

This is especially true if you are running over a LAN.

waterRIDE™ Group Training (Aus/NZ) Sessions - 2019

Upcoming training for 2019: Perth (Feb), Sydney (Mar), Brisbane (Mar) and Auckland (June).

Please visit www.waterRIDE.net/training for more information and to book your place.