



We are also pleased to announce that we are now offering group training sessions from our Newcastle/Hunter office, commencing at the end of April.

This year's sessions start soon, so get in early to secure your place!

Effective Flood Intelligence – Getting What You Need

Over the past many years we have helped a large number of government organisations and private businesses develop real-time flood forecasting systems.

As part of this process, delivering *effective* flood intelligence is paramount to the success of such systems.

Flood intelligence can be defined as key information relating to the *consequences* of a flood, essentially defining what a flood of XX size *means*.

Flood intelligence can be both historical (based on the outcomes of actual floods) or virtual (based on the outcomes of simulated or statistical floods – which often allows very rare and extreme flood consequences to be assessed).

Traditionally, base flood intelligence relates to the affectation of assets, such as: properties with over floor flooding, evacuation routes and time to/duration of closure, critical infrastructure operability status, gauge levels at which assets are affected, probabilities of asset affectation, etc.

Such base intelligence is readily created by integrating flooding information with other spatial layers, thereby facilitating a dynamic link between flooding and affectation.

However, creating *effective* flood intelligence occurs when the flood intelligence delivered is targeted to the needs of those using the information, and delivered in a format that aligns with the operations of those end users.

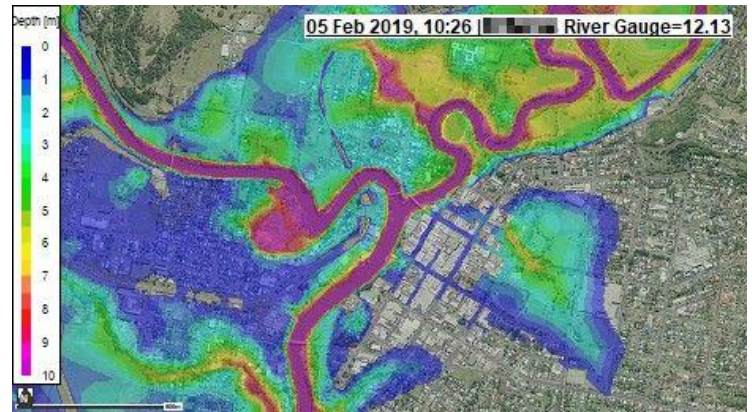
For example, an emergency manager may receive a depth map for a predicted flood, providing expected flood depths across the entire floodplain.

However, such a map may contain "too much" information, and effective flood intelligence could be just expected depths at key evacuation route low-points (see figures in adjacent column).

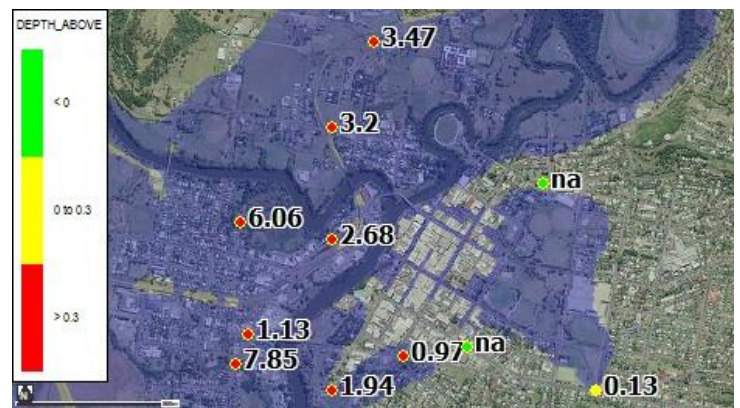
Similarly, a list of all properties flooded during an event may be useful to an emergency manager, but that same list broken down and grouped into various management regions may be a far more *effective* (and usable) list.

Effective flood intelligence is what makes base flood information truly valuable, and it's format is nearly limitless.

Fortunately, waterRIDE contains a wealth of tools to help you create the effective flood intelligence you need.



Flood Intelligence: Flood depth across the entire floodplain



Effective Flood Intelligence: Flood depths at key evacuation route low-points indicating closed (red), nearly closed (yellow), open (green)

Brisbane Office – Local Support

We are excited to announce that Trent Laves has joined the waterRIDE™ team and is based in our Brisbane office, providing an experienced local contact for our Queensland-based users.

Trent brings 10 years' experience in flood modelling, flood forecasting and disaster management using waterRIDE™, including "real-life" experience in the Brisbane City Council operations centre during the Brisbane 2011 flood.

Trent's Email: trent.laves@advisian.com

REMINDER: waterRIDE™ Training (Aus/NZ) Sessions - 2019

Upcoming training for 2019: Perth (Feb), Sydney (Mar), Brisbane (Mar), Newcastle (Mar/Apr) and Auckland (June).

Please visit www.waterRIDE.net/training for more information and to book your place. As always, places are strictly limited.