



Newsletter waterRIDE™

Issue #52

waterRIDE 10 – Enterprise Configuration

The new “one” waterRIDE™ concept of a single waterRIDE™ application that runs in a variety of modes is designed to make centralised application management easy.

An Enterprise configuration allows an organisation to centrally manage:

- Central projects list
- User access permissions
- Global application settings
- Global searchbox configuration
- Global palettes and hazards

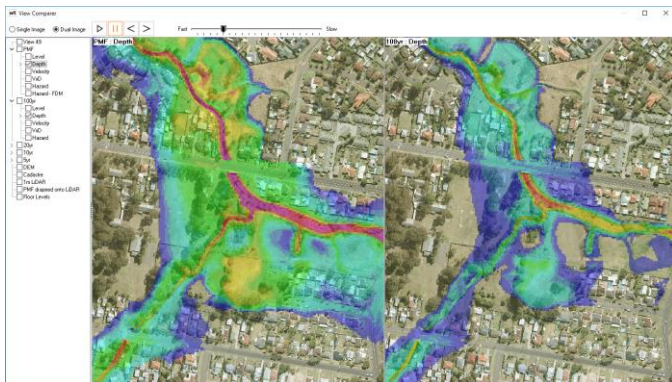
Even if your organisation is relatively small, you can benefit from the simplified management of an Enterprise configuration.

An Enterprise configuration also works particularly well with our new DATA Manager module.

Consult the Enterprise chapter of the manual, it’s actually pretty simple to setup and well worth a look (especially for those looking to make it really easy to share their flooding data with non-technical users).

Feature Spotlight – Split View

The new split view tool in waterRIDE™ 10 is an excellent way of comparing multiple views.



In addition to the classic “animation” of multiple views, it supports interactive side-by-side interrogation, which includes synchronised zooming and panning.

It can be accessed from the *Interrogate* Live Panel, in the *View* tool group (this replaces the *Compare Views* tool).

Feature Spotlight – Hydraulic Risk

Hydraulic risk is the combination of hydraulic hazard and probability, reflecting the fact that a high hazard in a rare flood has a different risk profile to a high hazard in a frequent flood.

		FLOOD HAZARD CATEGORY					
		H1	H2	H3	H4	H5	H6
LIKELIHOOD	1 in 10000	Low	Low	Moderate	High	High	Extreme
	1 in 100	Low	Low	Moderate	High	Extreme	Extreme
	1 in 20	Low	Moderate	Moderate	High	Extreme	Extreme
	1 in 10	Low	Moderate	High	Extreme	Extreme	Extreme

These risk categories can be readily setup and applied across the range of design flood probabilities to create a risk surface. Have a look at the Risk manager tool on the *Import* live panel.

waterRIDE 10 – Release

Those with valid Annual Maintenance Plans should have received download links for waterRIDE™ 10.

There was an issue with the cloud download link for some. Please let us know if the resent link has not fixed your issues.

waterRIDE 10 – New Modules and Licensing Options

With waterRIDE™ 10, we have released a new module “DATA Manager”, as well as an Enterprise license of Viewer (unlimited users within an organisation).

Give us a call or send an email if the above are of interest.

Group Training

The next group training is on in Sydney on 11th/12th February. See www.waterRIDE.net/training for details.